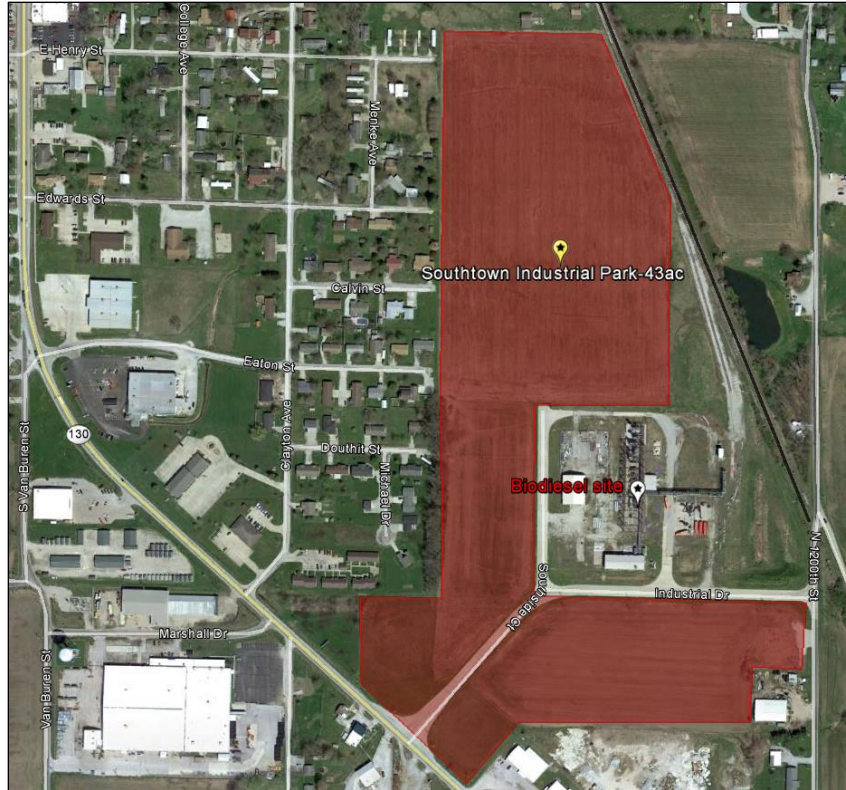


“Newton Southtown Industrial Park” – State Route 130, Newton, IL



<u>Property Info</u>		<u>Transportation</u>	
County:	Jasper	Indiana Rail Road service:	6 days/week
Acres:	43	Nearest 4-Lane Highway:	Interstate 70 / Interstate 57
Zoning:	Industrial-Heavy	Distance to Highways:	19 miles / 25 miles
Subdivide?	Yes	Nearest Commercial Airport:	Terre Haute Int'l (HUF)
Asking Price:	Negotiable/low	Distance to Airport:	70 miles

<u>Utilities</u>		<u>Electric Service:</u>	
Electric:	Ameren Illinois		Several adjacent options
Gas:	Ameren Illinois	Gas Line:	2 inch main
Water:	City of Newton	Water Line:	8 inch main
Sewer:	City of Newton	Sewer Line:	10 inch main
Broadband:	Yes		

Incentives
City of Newton, IL www.cityofnewtonil.com (Located in TIF & Enterprise Zone)

Indiana Rail Road Contact
Eric Powell, Manager, Intermodal & Economic Development, (317) 616-3436, eric.powell@inrd.com
Newton Contact
Ken Larrimore, Jasper County Economic Development, (618) 783-3409 or larrimore@illinois.edu